



G4-4

好社區真重要

論語古文解釋

The Explanation of The Analects

里仁為美。

原句：「里仁為美，擇不處仁，焉得知！」

當我們選擇居住環境時，應該找有善良風氣的地方，如果不這麼選擇，就無法讓自己成為更好的人。好的環境能引導人們走上光明，不好的環境則可能誘使人們染上惡習。

When we choose where to live, we should look for places with a kind and positive atmosphere. If we don't make this choice, we may not be able to become better people. A good environment can guide us toward a brighter path, while a bad environment may tempt us into bad habits.



閱讀前，聊一聊

Before Reading



你住的地方有哪些鄰居？你喜歡他們嗎？為什麼？

Who are your neighbors? Do you like them? Why?



如果要搬家，你會希望新家附近有什麼？

(例如：公園、超市、學校)，為什麼？

If you had to move to a new home, what would you want nearby?

(For example, a park, supermarket, or school) Why?



如果你看到有鄰居需要幫助，你會怎麼做？

If you saw a neighbor in need of help, what would you do?





閱讀中，聊一聊
During Reading

P.3

阿弟一家人為什麼要搬家？

Why did A-Di's family make a move?

P.8

第一間房子在捷運站附近，為什麼媽媽不喜歡？

The first house was near the MRT station. Why didn't Mom like it?



P.12

第二間房子在市中心，路邊有垃圾，這會對生活有什麼影響？

The second house was in the city center, and there was trash on the streets. How might this affect daily life?

P.16

你覺得媽媽選房子的標準是什麼？

What were Mom's criteria for choosing a house?

P.20

阿弟和阿妹最喜歡哪間房子？為什麼？

Which house did A-Di and A-Mei like the best? Why?



P.24

學校附近的房子有什麼吸引人的地方？

What is attractive about the houses near the school?

P.28

如果你是阿弟或阿妹，你會選哪間房子？

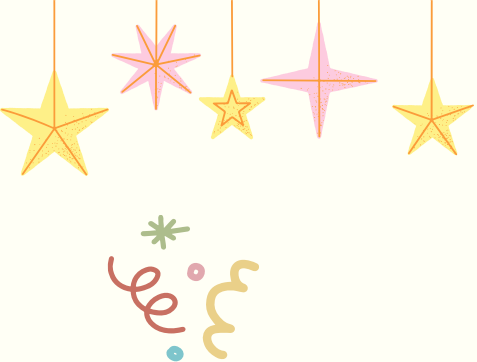
If you were A-Di or A-Mei, which house would you choose?

P.30

阿弟一家人搬進新家後，他們對鄰居有什麼感受？

After A-Di's family moved into their new home, how did they feel about their neighbors?





閱讀後，聊一聊

After Reading



搬到一個新地方，你會如何認識鄰居？

How do you get to know your neighbors when you move to a new place?

如果有新鄰居搬來，你會做什麼來歡迎他們？

If new neighbors move in, what would you do to welcome them?

你覺得如果你的朋友住在你附近，會讓你更開心嗎？

為什麼？

Do you think it would make you happier if your friends live near you?

Why?



我的夢想社區

My Dream Community

時間：10分鐘

Time: 10 minutes

材料：紙、彩色筆或蠟筆

Materials: paper, colored pens or crayons

步驟：

1. 爸爸媽媽和孩子一起討論心目中的「夢想社區」應該有哪些地方(如公園、圖書館、遊樂場)?
2. 孩子用彩色筆畫出心目中的夢想社區，可以標上名稱(例如：快樂圖書館、友誼公園)。
3. 完成後，孩子和家長分享設計，並說明為什麼他們選擇這些地方。

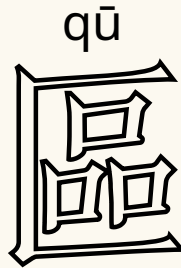
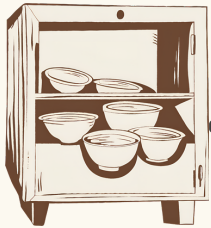
STEPS:

1. Parents and children discuss what they think should be in their "dream community" (such as a park, library, playground).
2. Children use colored pens to draw their dream community, and they can label places with names (for example, "Happy Library" or "Friendship Park").
3. After finishing, children and parents share their designs and explain why they chose these places.



認識漢字

Learning Chinese Characters is Fun



「區」這個字由「品」在「凵」中組成，
「品」表示許多物品，「凵」是盛物的器具，
原意是「收藏」或「藏匿」，現在則表示「地
域」或「範圍」。

The character "區" is composed of "品," representing items, inside "凵," a container for holding things. Its original meaning was "to store" or "to conceal," but now it refers to "region" or "area."

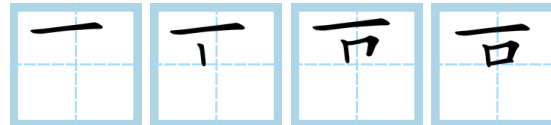
- 例如：社區
- For example: Community

練習

Practice

請小朋友照筆畫練習寫字：

Practice writing this character according to its stroke order.

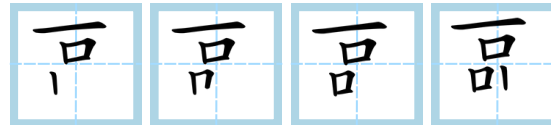


第1畫

第2畫

第3畫

第4畫

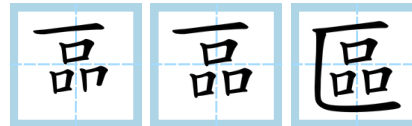


第5畫

第6畫

第7畫

第8畫



第9畫

第10畫

第11畫

